

# 520 CORPORATE CENTER

Building B

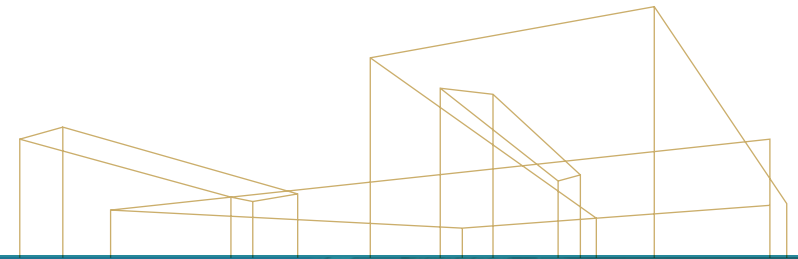


2353

 Kidder Mathews

2353 130TH AVE NE, BELLEVUE, WA 98005

# 520 CORPORATE CENTER BUILDING B



±15,815 SF  
Available



**HIGH IMAGE TWO-STORY  
OFFICE BUILDING**



**GOOD MIX OF OPEN AREA  
& WINDOW LINE PRIVATE  
OFFICES**



**CLOSE PROXIMITY TO  
LIGHT RAIL, SPRING  
DISTRICT, & MICROSOFT**



**PARKING RATIO OF 3.5  
STALLS PER 1,000 SF**



**EASY ACCESS TO I-405,  
SR-520, & BELLEVUE CBD**



**EXTENSIVE WINDOW  
LINES WITH NATURAL  
LIGHT & OUTDOOR PATIO**



**DIRECT ACCESS TO SUITE  
VIA BUILDING ELEVATOR**



**ENTIRE SECOND FLOOR  
AVAILABLE FOR LEASE**

**For leasing  
information  
contact**

**TODD GAUTHIER**  
425.450.1118  
todd.gauthier@kidder.com

**JASON BLOOM**  
425.450.1102  
jason.bloom@kidder.com

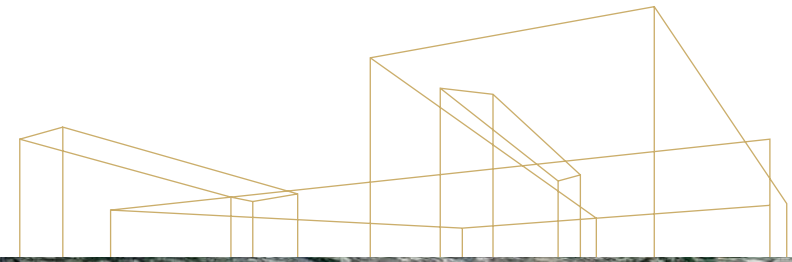
**JACK ALBRECHT**  
425.450.1114  
jack.albrecht@kidder.com

[520CORPORATEB.COM](http://520CORPORATEB.COM)

This information supplied herein is from sources we deem reliable. It is provided without any representation, warranty, or guarantee, expressed or implied as to its accuracy. Prospective Buyer or Tenant should conduct an independent investigation and verification of all matters deemed to be material, including, but not limited to, statements of income and expenses. Consult your attorney, accountant, or other professional advisor.



# 520 CORPORATE CENTER BUILDING B



For leasing  
information  
contact

**TODD GAUTHIER**  
425.450.1118  
todd.gauthier@kidder.com

**JASON BLOOM**  
425.450.1102  
jason.bloom@kidder.com

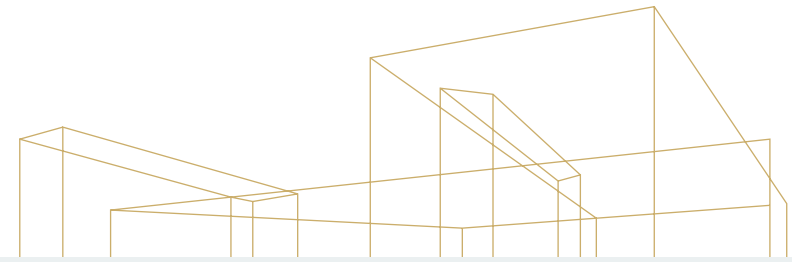
**JACK ALBRECHT**  
425.450.1114  
jack.albrecht@kidder.com

[520CORPORATEB.COM](http://520CORPORATEB.COM)

This information supplied herein is from sources we deem reliable. It is provided without any representation, warranty, or guarantee, expressed or implied as to its accuracy. Prospective Buyer or Tenant should conduct an independent investigation and verification of all matters deemed to be material, including, but not limited to, statements of income and expenses. Consult your attorney, accountant, or other professional advisor.



# 520 CORPORATE CENTER BUILDING B



## SUITE 200

**±15,815**

SQUARE FEET AVAILABLE

**±2,458 SF**

ADDITIONAL STORAGE SPACE  
AVAILABLE

**\$24.00/SF**

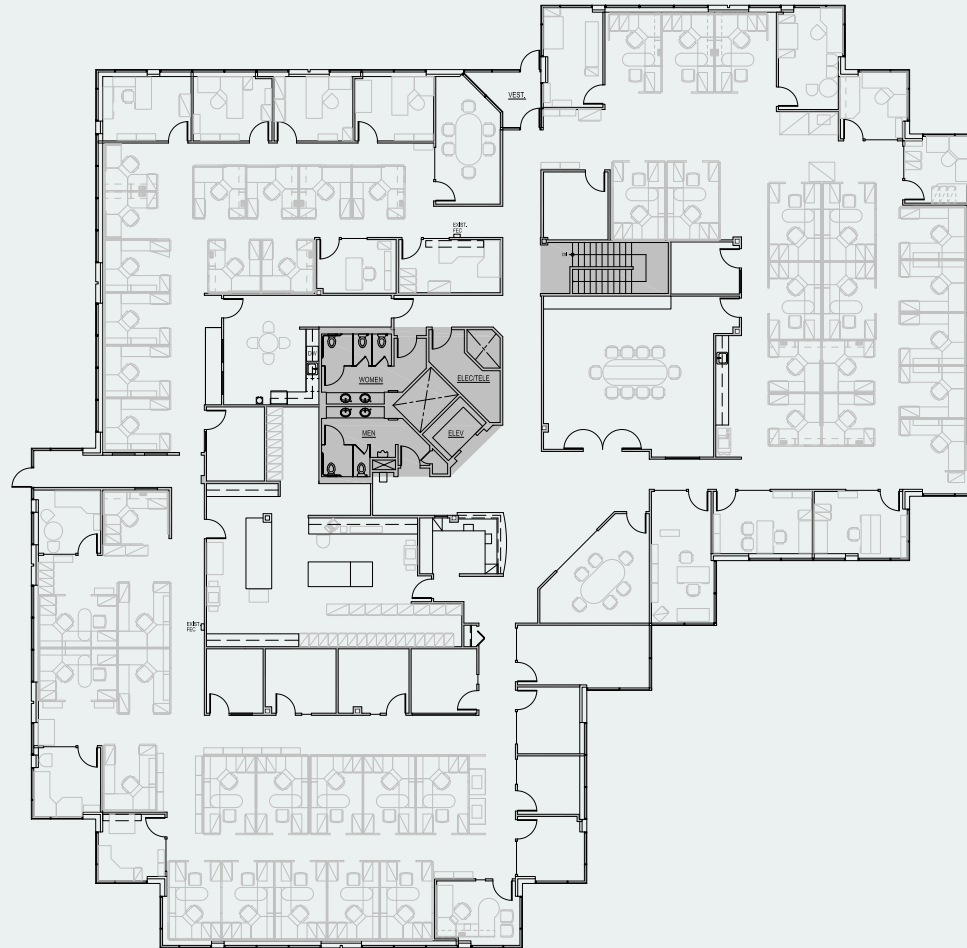
BASE RENT

**NNN**

EXPENSES

**NOW**

AVAILABLE



For leasing  
information  
contact

**TODD GAUTHIER**  
425.450.1118  
[todd.gauthier@kidder.com](mailto:todd.gauthier@kidder.com)

**JASON BLOOM**  
425.450.1102  
[jason.bloom@kidder.com](mailto:jason.bloom@kidder.com)

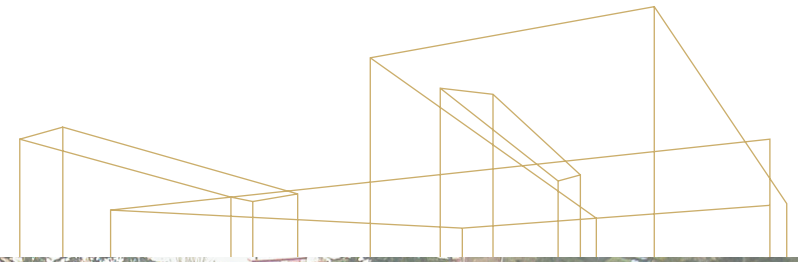
**JACK ALBRECHT**  
425.450.1114  
[jack.albrecht@kidder.com](mailto:jack.albrecht@kidder.com)

[520CORPORATEB.COM](http://520CORPORATEB.COM)

This information supplied herein is from sources we deem reliable. It is provided without any representation, warranty, or guarantee, expressed or implied as to its accuracy. Prospective Buyer or Tenant should conduct an independent investigation and verification of all matters deemed to be material, including, but not limited to, statements of income and expenses. Consult your attorney, accountant, or other professional advisor.



# 520 CORPORATE CENTER BUILDING B



520 CORPORATE  
CENTER BLDG B

For leasing  
information  
contact

**TODD GAUTHIER**  
425.450.1118  
[todd.gauthier@kidder.com](mailto:todd.gauthier@kidder.com)

**JASON BLOOM**  
425.450.1102  
[jason.bloom@kidder.com](mailto:jason.bloom@kidder.com)

**JACK ALBRECHT**  
425.450.1114  
[jack.albrecht@kidder.com](mailto:jack.albrecht@kidder.com)

[520CORPORATEB.COM](http://520CORPORATEB.COM)

This information supplied herein is from sources we deem reliable. It is provided without any representation, warranty, or guarantee, expressed or implied as to its accuracy. Prospective Buyer or Tenant should conduct an independent investigation and verification of all matters deemed to be material, including, but not limited to, statements of income and expenses. Consult your attorney, accountant, or other professional advisor.

